

MWC3 磁性固定器 MAGNETIC CLAMP

产品主要用途和特性

用途：适用于向下压的夹持并带有螺纹孔可快速安装，可以与配套夹紧装置组合使用。我们建议每套装置至少用两个固定器以减少滑移。

特点：磁性固定器是用于固定铁板、管子、棒子、木棍、木板以及角钢、槽钢等，以防它们移动。固定器的底部和四个侧面都有磁力，可以很精确的形成一个90°角。本产品由一个180°旋转开关控制，操作简单，快捷。

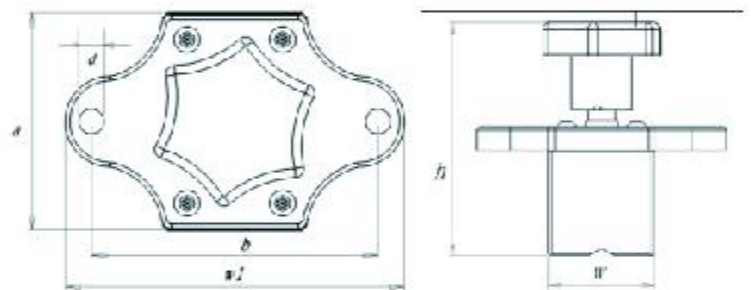
The main uses and characteristics

Application : This magnetic clamps are ideal for downward pressure clamping and come with screw holds for fast mount. Simple drill a hole in the fixturing material and place the clamp in. We recommend at least two clamps per fixture to minimize slippage.

Features : This magnetic clamp is suitable to fix iron plate, tube, stick, wood, angle steel and channel steel etc, to prevent them from moving. The bottom of the clamp and both 4 sides have magnetics, creat precise 90°degrees. Controlled by a 180°On/Off switch, simple operate and fast set up anywhere on ferrous metal.



型号 Model	外形尺寸 (mm) Shape Size						饱和厚度(mm) Full Saturation Thickness	1/2剪切工作负载(kg) Shear Working Load	拉脱力(kg) Pull Off Force	重量 (kg) Weight
	A	W	W1	H	B	D				
MWC3S	48	31.5	74.5	70	63	5	4	6	70	0.4
MWC3M	65	41.5	88	70	75	5	5	8	110	0.685
MWC3L	69	41.5	88	80	75	5	7	10	185	0.88



注：以上产品规格和尺寸仅供参考，以本公司实际产品为准，变更时恕不另行通知

The above products specifications and dimensions are for reference only, shall be subject to the actual product by our company, are subject to change without prior notice

MWC2 方形磁性固定器 SQUARE MAGNETIC CLAMP

产品主要用途和特性

用途：方形磁性固定器是用于固定铁板，管子，棒子，木棍，木板以及角钢，槽钢等，以防它们移动。

特点：1. 固定器的底部和四个侧面都有磁力，六面夹角都是90°角。

2. 本产品由一个180°旋转开关控制，操作简单，快捷。

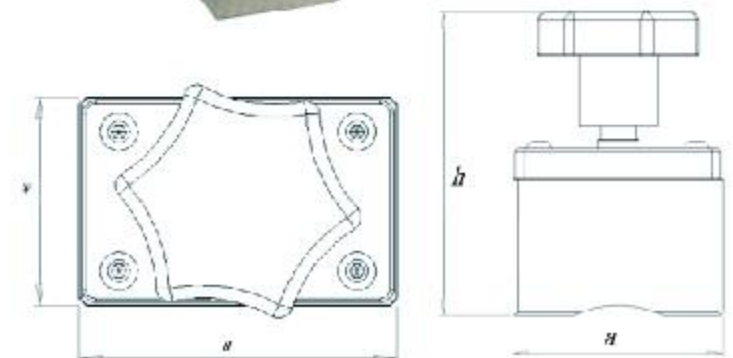
The main uses and characteristics

Application : This square magnetic clamp is suitable to fix iron plate, tube, stick, wood, angle steel and channel steel etc, to prevent them from moving.

Features : 1. The bottom of the clamp and both four sides have magnetics, six sides machined at the angle of 90°
2. Controlled by a 180°On/Off switch, simple operate and fast set up anywhere on ferrous metal.



型号 Model	外形尺寸 (mm) Shape Size			饱和厚度(mm) Full Saturation Thickness	1/2剪切工作负载(kg) Shear Working Load	拉脱力(kg) Pull Off Force	重量 (kg) Weight
	A	W	H				
MWC2S	48	31.5	70	4	6	70	0.38
MWC2M	60	41.5	70	5	8	110	0.65
MWC2L	69	41.5	80	7	10	185	0.83



注：以上产品规格和尺寸仅供参考，以本公司实际产品为准，变更时恕不另行通知

The above products specifications and dimensions are for reference only, shall be subject to the actual product by our company, are subject to change without prior notice